



I-PICK
868 MHz RFID Handheld
Bluetooth Connection

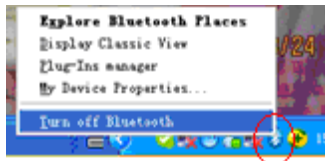
iDTRONIC GmbH
Donnersbergweg 1
67059 Ludwigshafen
Germany/Deutschland

Phone: +49 621 6690094-0
Fax: +49 621 6690094-9
E-Mail: info@idtronic.de
Web: idtronic-rfid.com

Issue 0.1
– 18. February 2016 –

Subject to alteration without prior notice.
© Copyright iDTRONIC GmbH 2016
Printed in Germany

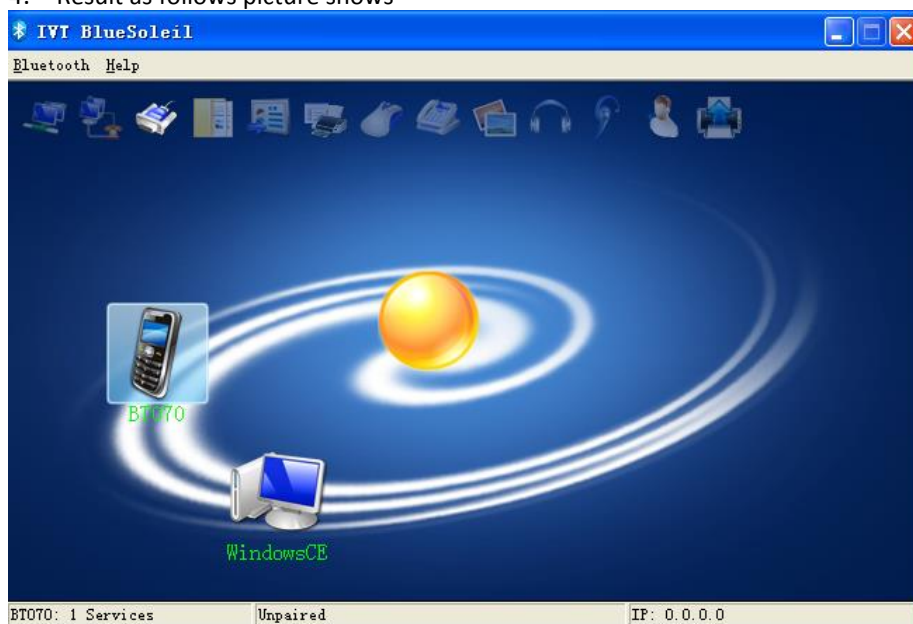
1. Turn on the reader power
2. Press “display classic view” button as following



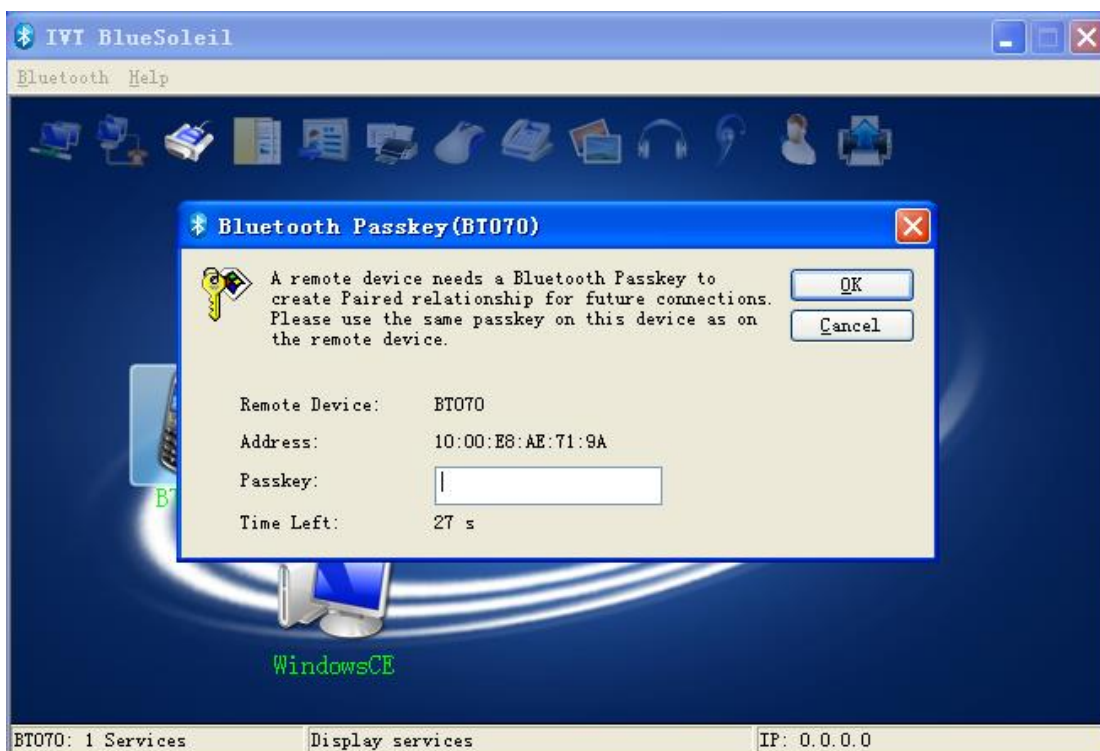
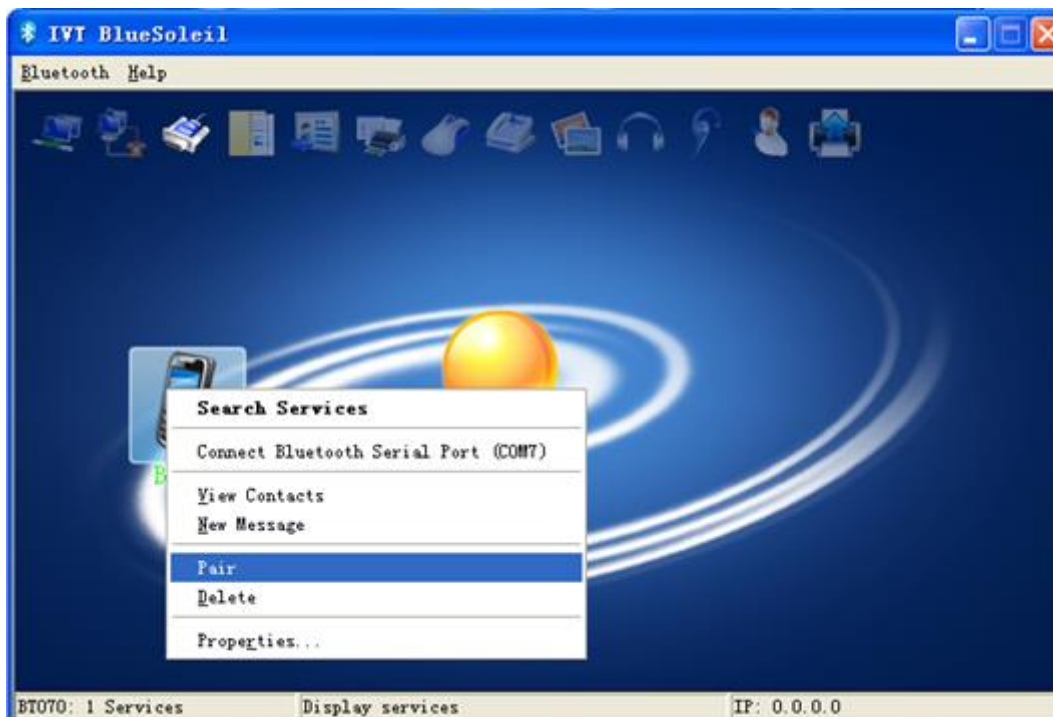
3. Press “search devices”



4. Result as follows picture shows



5. Choose the right device and right click the mouse. And then press “pair” button, it need to input a password:0000



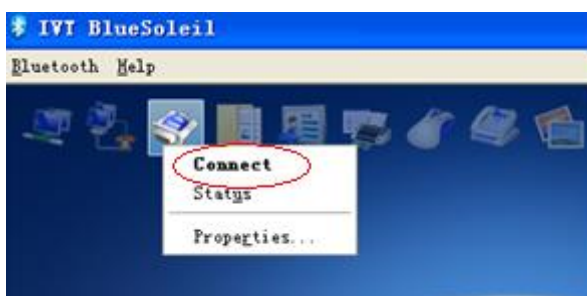
It will shows as follows after pair success



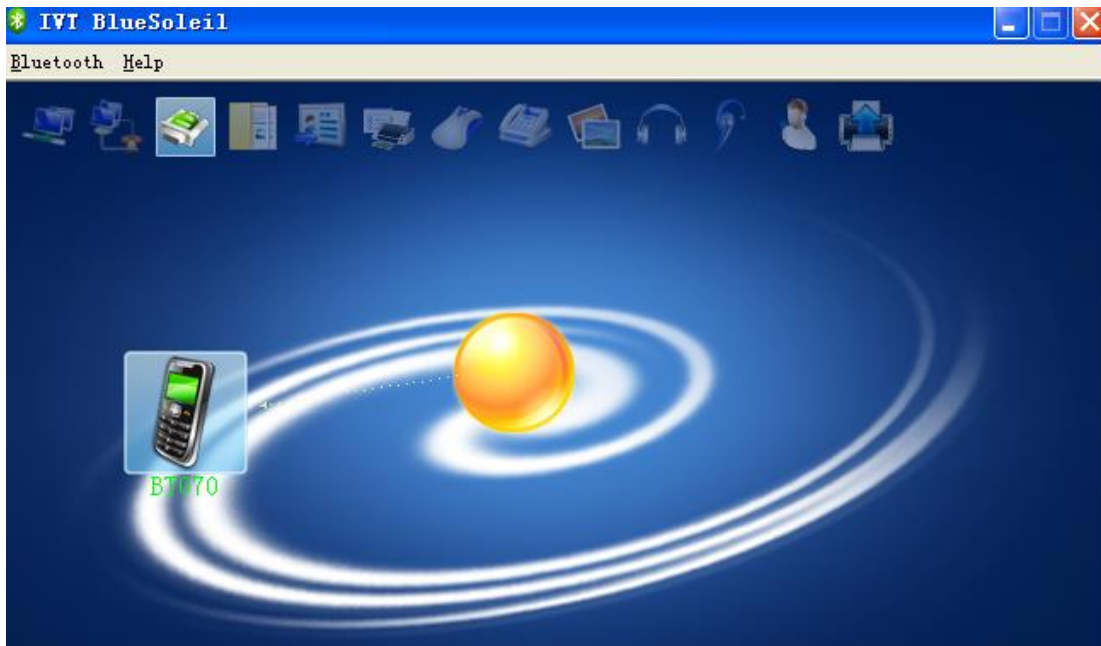
6. Right click the device and press “search device”,



7. Press “connect” button as follow picture shows, Connection result will shows as following picture



8. After connect success, showing as follow picture



9. Press “My device properties” and check which Com port connect

